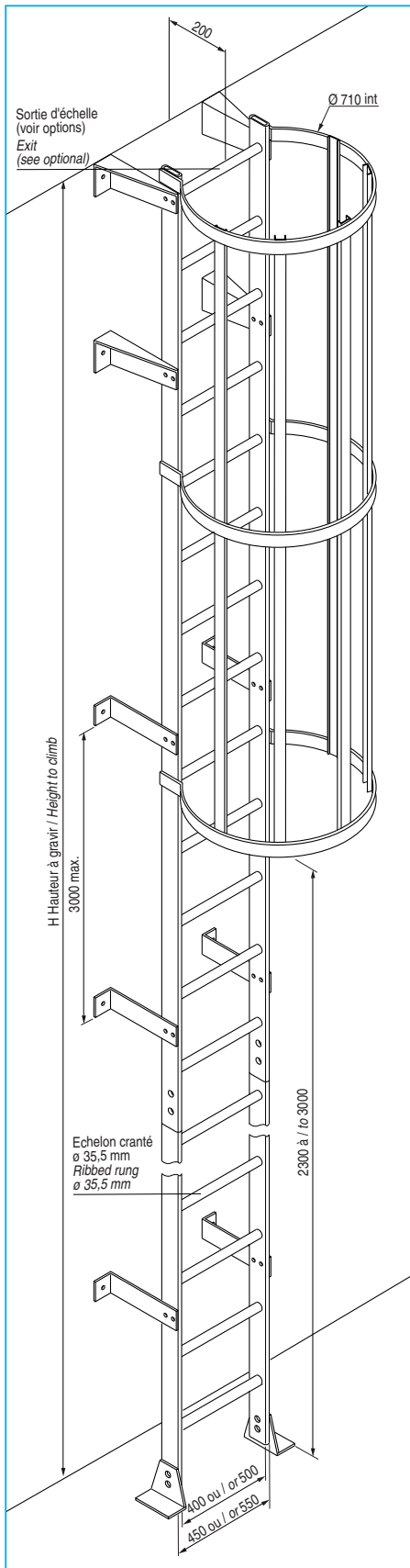


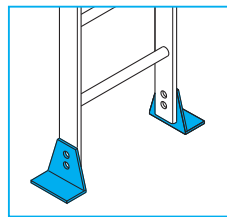
# TANIS : ECHELLES A CRINOLINE / CAGED LADDERS

- Conforme à PR ISO 14122-4
- Matériaux : profilés pultrudés verre / résine polyester isophtalmique gris. Vinylester beige pour contact alimentaire sur demande.

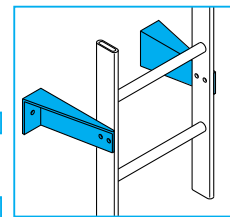
- Meet the PR ISO 14122-4 requirements
- Materials : isophthalic polyester resin/ fiberglass pultruded sections, grey colored. Vinylester resin, beige colored, for food compatibility on request.



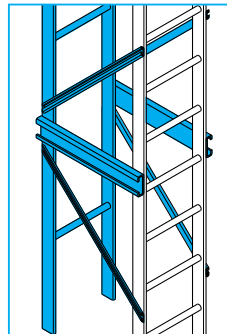
## OPTIONS/OPTIONAL



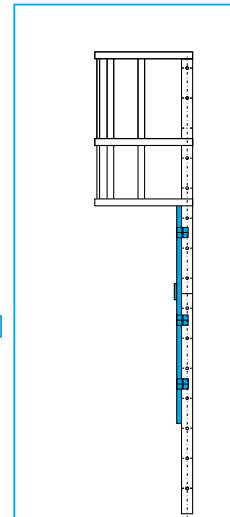
- Patins / Base angle
- antidérapant pour appui au sol non skid surface for floor standing
  - sans antidérapant pour fixation au sol smooth surface for floor fixing



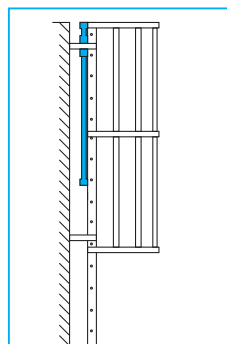
- Echelles suspendues : pattes de fixation renforcées en partie haute Strenthener wall bracket for hanging ladder



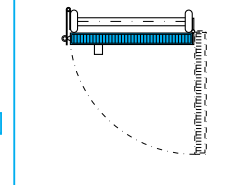
- Renfort de sécurité pour volée > 6 m sans fixation intermédiaire Special structure strengthener for intervals exceeding 6.0 m without wall brackets



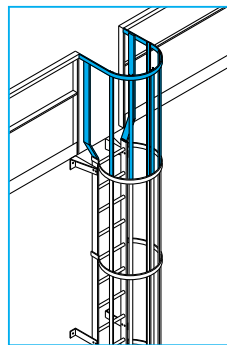
- Condamnation d'accès type A «no trespassing» gate



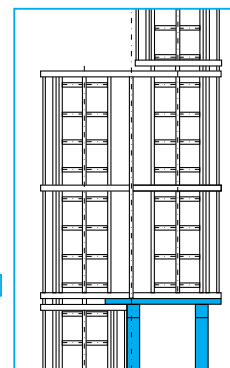
- Sortie à crosse Scroll exit



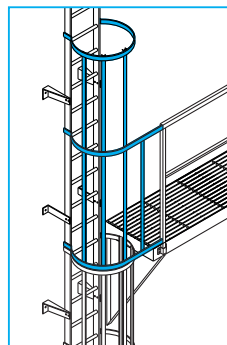
- Palier de repos pour volées > 9m Landing for intervals exceeding 9.0 m



- Sortie de face Front exit



- Sortie latérale Side exit



- Eclissage pour volées > 6 m ou pour faciliter le montage et transport Splicing

